

# Bee City USA - Eureka Springs

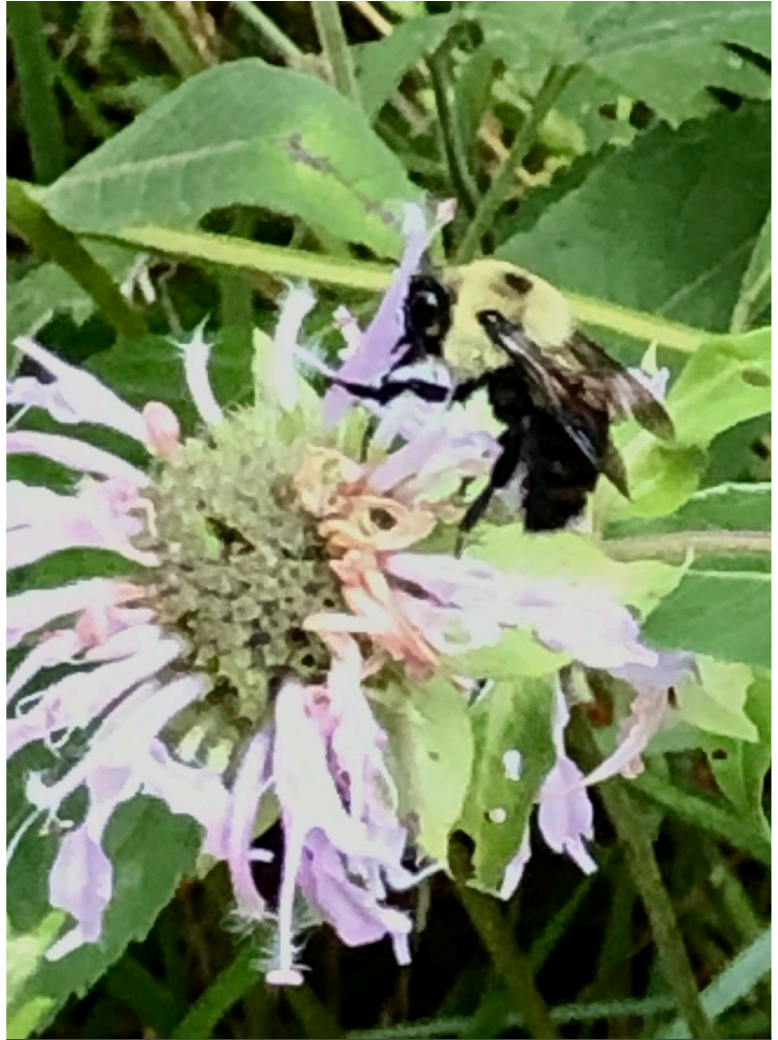
Report on 2020

## Pollinator Habitat Creation & Enhancement

Most of our habitat enhancement was accomplished at private yards, gardens and acreage. Our city also completed the start as a Mayors' Monarch Pledge City. As a result, the Parks Commission has committed to the creation of pollinator gardens in two of the city public parks with signage and habitat for native bees. Parks Commission has also provided for the start of 1000 milkweed plants.



Early May 2020 on reclaimed right of way buried 30" & 36" water line on privately owned land. Photo by Ken Trimble



---

## Education & Outreach

All public events were postponed and cancelled due to Covid. However, our FaceBook presence continued and expanded.

---

## Policies & Practices

### Integrated Pest Management Plan:

### Recommended Native Plant List:

<https://www.wildflower.org/collections/collection.php?collection=AR>

### Recommended Native Plant Supplier List:

[Missouri Wildflowers Nursery Jefferson City, MO 573-496-3492 Website: mowildflowers.net](#) [Ozark Soul Native Plants Thornfield, MO Website: www.ozarksoul.com Email: natives@ozarksoul.com](#) [White River Nursery Fayetteville, AR 479-442-2061 Website: whiterivernursery.com](#) [Holland Wildflower Farm Elkins, AR 479-283-6709 Website: hollandwildflowerfarm.com](#) [Ozark Native Plants St. Paul, AR Website: ozarknativeplants.com](#)

---

## Learn More

